

FAST PIPE[®]
BY RAPIDAIR

A photograph showing four blue, cylindrical aluminum pipes of varying diameters, arranged in a cluster. The pipes are set against a background of a factory or industrial facility with a white metal structure and a corrugated metal roof.

**Modular Aluminum
Compressed Air
Piping**

SIZES RANGE FROM:

$\frac{3}{4}$ " - 1" - 1 $\frac{1}{2}$ " - 2" - 3" - 4" - 6" - 8"

Today's Improved Compressed Air Piping Method

Fast Installation

- Compression style fittings make installation simple
- Aluminum piping is easy to cut and lift
- O-ring seals ensure a leak free system
- No gluing, threading, or soldering
- Installs in half the time as some traditional methods

Diverse

- Install in small shops to industrial plants
- Connect to any existing piping system
- Expand or modify the system with ease

Superior Air Quality

- No corrosion in the pipe and fitting means longer tool life
- Cools hot compressed air quickly for better filter performance

Energy Efficient

- Smooth inner wall and free flowing fittings lower compressed air costs
- Sealed connections means your compressor run time is less

3/4" - 3" Compression Type

Step 1



(see page 11 for detailed instructions)

Step 2



Step 3



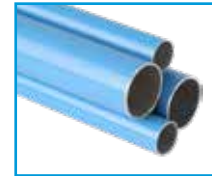
4" - 8" Lug Type



(see page 12 for detailed instructions)

Technical Specs

- 190 psi working pressure
- 8" 150psi working pressure
- 0° F to 140° F
- Compatible with all types of compressor lubricants
- Compressed air, vacuum, inert gas



General System Ratings

- Fire resistant to flammability standard UL94HB
- OSHA Compliant

Aluminum Pipe Specs 3/4" - 8"

- Alloy grade
- Extruded to ASTM B221, B429
- Blue powder coat, RAL5012 outside
- Green powder coat, RAL6018 outside
- Non-chromate conversion coating inside

Fittings Specs 3/4" - 2"

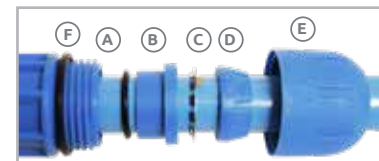
- Nylon 6 base with fiberglass reinforcement
- Bite ring: stainless steel
- O-ring: Nitrile

Fittings Specs 3"

- Diecast Aluminum Alloy
- Bite ring: stainless steel
- O-ring: Nitrile
- Electrocoated

Fittings Specs 4" - 8"

- Diecast Aluminum Alloy
- Seal: Nitrile
- Powder Coat



Fittings Parts

- A. O-Ring
- B. Backer
- C. SS Bite Ring
- D. Collet
- E. Cone Nut
- F. Tension O-Ring*

Tension O-ring (F) is found on the 3/4" & 1" sizes only



Spare Parts Kit (Includes A & C)

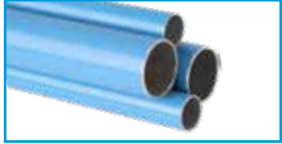
SIZE	PART NUMBER
3/4"	F1076
1"	F2076
1/2"	F4076
2"	F5076
3"	F17076



SIZE	SEAL
4"	FI8076
6"	FI9076



Pipe



Blue

SIZE	MM	PART #	OUTSIDE	INSIDE	LENGTH	WEIGHT
3/4"	20mm	F1000	.79 in.	.69 in.	19 ft. 2 in.	2.6 lbs.
1"	25mm	F2000	.98 in.	.87 in.	19 ft. 2 in.	4.2 lbs.
1½"	40mm	F4000	1.57 in.	1.43 in.	19 ft. 2 in.	8.8 lbs.
2"	50mm	F5000	1.97 in.	1.81 in.	19 ft. 2 in.	10.1 lbs.
3"	80mm	FI7000	3.15 in.	2.98 in.	19 ft. 2 in.	21.0 lbs.



Green

SIZE	MM	PART #	OUTSIDE	INSIDE	LENGTH	WEIGHT
3/4"	20mm	F1000G	.79 in.	.69 in.	19 ft. 2 in.	2.6 lbs.
1"	25mm	F2000G	.98 in.	.87 in.	19 ft. 2 in.	4.2 lbs.
1½"	40mm	F4000G	1.57 in.	1.43 in.	19 ft. 2 in.	8.8 lbs.
2"	50mm	F5000G	1.97 in.	1.81 in.	19 ft. 2 in.	10.1 lbs.



SIZE	MM	PART #	OUTSIDE	INSIDE	LENGTH	WEIGHT
4"	100mm	FI8000	4.03 in.	3.79 in.	19 ft. 2 in.	33.5 lbs.
6"	150mm	FI9000	6.04 in.	5.76 in.	19 ft. 2 in.	64.5 lbs.
8"	205mm	FI205L230	8.07 in.	7.69 in.	19 ft. 2 in.	95.5 lbs.

Union



SIZE	PART NUMBER
3/4"	F1002
1"	F2002
1½"	F4002
2"	F5002



SIZE	PART NUMBER
3"	FI7002



SIZE	PART NUMBER
4"	FI8002
6"	FI9002
8"	FI205002

Reducing Union



SIZE	PART NUMBER
1" x 3/4"	F2121
1½" x 3/4"	F4223
1½" x 1"	F4221
2" x 3/4"	F5223
2" x 1"	F5221
2" x 1½"	F5421



SIZE	PART NUMBER
6" x 4"	FI9821
8" x 6"	FI205821

90° Elbow



SIZE	PART NUMBER
3/4"	F1003
1"	F2003
1½"	F4003
2"	F5003



SIZE	PART NUMBER
3"	FI7003



SIZE	PART NUMBER
4"	FI8003
6"	FI9003
8"	FI205003

45° Elbow



SIZE	PART NUMBER
1"	F2004
1½"	F4004
2"	F5004



SIZE	PART NUMBER
4"	FI8004
6"	FI9004
8"	FI205004

90° Reducing Elbow NPT



SIZE	DROP SIZE FEMALE	PART #
3/4"	1/4" NPT	F1073
3/4"	1/2" NPT	F1093
1"	1/4" NPT	F2073
1"	1/2" NPT	F2093
1"	3/4" NPT	F2083



Inline Valve



SIZE	PART NUMBER
3/4"	F1111
1"	F2222
1½"	F4444
2"	F5555



SIZE	PART NUMBER
3"	FI7777



SIZE	PART NUMBER
4"	FI8888
6"	FI9999
8"	FI205999

Equal Tee



SIZE	PART NUMBER
3/4"	F1005
1"	F2005
1 1/2"	F4005
2"	F5005



SIZE	PART NUMBER
3"	FI7005



SIZE	PART NUMBER
4"	FI8005
6"	FI9005
8"	FI205005

Reducing Tee NPT



MAIN SIZE	DROP SIZE FEMALE	PART NUMBER
3/4"	1/4" NPT	F1007
3/4"	1/2" NPT	F1009
1"	1/4" NPT	F2007
1"	1/2" NPT	F2009
1"	3/4" NPT	F2008
1 1/2"	1/2" NPT	F4009
1 1/2"	3/4" NPT	F4008
2"	1/2" NPT	F5009
2"	3/4" NPT	F5008



MAIN SIZE	DROP SIZE FEMALE	PART NUMBER
3"	2" NPT	FI7509



MAIN SIZE	DROP SIZE FEMALE	PART NUMBER
4"	2" NPT	FI8221
4"	3" NPT	FI8321
6"	2" NPT	FI9221
6"	3" NPT	FI9331

Reducing Tee



MAIN SIZE	DROP SIZE	PART NUMBER
1"	3/4"	F2107
1 1/2"	3/4"	F4206
1 1/2"	1"	F4207
2"	3/4"	F5206
2"	1"	F5207



MAIN SIZE	DROP SIZE	PART NUMBER
"	"	: =&\$) %&#&

Cross



SIZE	PART NUMBER
3/4"	F1051
1"	F2051
1 1/2"	F4051
2"	F5051

Flange Gasket



SIZE	PART NUMBER
3"	FI7905
4"	FI8905
6"	FI9905

Flange Connections

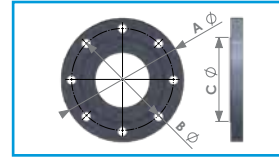


SIZE	PART NUMBER
3"	FI7900



SIZE	PART NUMBER
4"	FI8900
6"	FI9900
8"	FI205900

ANSI Class 150 Flange Dimensions



SIZE	A	B	C	BOLT HOLES
3"	7.50	6.00	5.00	4
4"	9.00	7.50	6.18	8
6"	11.00	9.50	8.50	8
8"	13.50	11.75	10.63	8

Expansion Joints



FEMALE NPT X FEMALE NPT

SIZE	PART NUMBER
1"	F0615
1 1/2"	F0616
2"	F0617



FEMALE NPT X FEMALE NPT

SIZE	PART NUMBER
3"	F0619



FLANGE X FLANGE

SIZE	PART NUMBER
4"	F0621
6"	F0622

Any piping system will expand and contract with temperature changes, use this guide for installation of expansion joints to compensate for this movement of aluminum pipe in non-conditioned buildings

TEMP CHANGE	MAXIMUM STRAIGHT RUN DISTANCE						
	3/4"	1"	1 1/2"	2"	3"	4"	6"
10°F	700 ft.	600 ft.	550 ft.	500 ft.	300 ft.	250 ft.	225 ft.
20°F	500 ft.	460 ft.	420 ft.	370 ft.	230 ft.	190 ft.	175 ft.
35°F	350 ft.	310 ft.	280 ft.	250 ft.	150 ft.	125 ft.	100 ft.
55°F	260 ft.	230 ft.	200 ft.	190 ft.	120 ft.	95 ft.	75 ft.
70°F	200 ft.	190 ft.	170 ft.	150 ft.	100 ft.	75 ft.	50 ft.

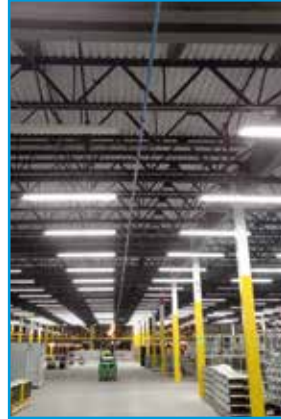
Threaded Male Nipple



MAIN SIZE	MALE THREAD	PART NUMBER
3/4"	1/2" NPT	F1018
3/4"	3/4" NPT	F1118
1"	1/2" NPT	F2018
1"	3/4" NPT	F2118
1"	1" NPT	F2218
1 1/2"	1" NPT	F4218
1 1/2"	1 1/2" NPT	F4418
2"	1 1/2" NPT	F5418
2"	2" NPT	F5518



MAIN SIZE	MALE THREAD	PART NUMBER
3"	3" NPT	FI7718



Threaded Female Nipple



MAIN SIZE	FEMALE THREAD	PART NUMBER
3/4"	3/4" NPT	F1120
1"	1" NPT	F2220
1 1/2"	1 1/2" NPT	F4420



MAIN SIZE	FEMALE THREAD	PART NUMBER
3/4"	1/2" NPT	F1221
1"	1/2" NPT	F2221
1 1/2"	1/2" NPT	F4241
1"	3/4" NPT	F2231
1 1/2"	3/4" NPT	F4231
1 1/2"	1/2" NPT	F4241
2"	3/4" NPT	F5231
2"	1/2" NPT	F5241

Jumper Hose



STAINLESS STEEL

MALE NPT X SWIVEL FEMALE NPT

MAIN SIZE	LENGTH	PART NUMBER
1 1/2"	18"	F0225
1 1/2"	36"	F0226
2"	36"	F0227
3"	36"	F0228



RUBBER

MALE NPT X SWIVEL FEMALE NPT

MAIN SIZE	LENGTH	PART NUMBER
1/2"	2 ft.	F0212
1/2"	3 ft.	F0213
3/4"	2 ft.	F0214
3/4"	3 ft.	F0215
3/4"	5 ft.	F0221
1"	2 ft.	F0216
1"	3 ft.	F0217



STAINLESS STEEL FLANGE

MAIN SIZE	LENGTH	PART NUMBER
4"	36"	F0234
6"	36"	F0236

End Cap



SIZE	PART NUMBER
3/4"	F1006
1"	F2006
1 1/2"	F4006
2"	F5006



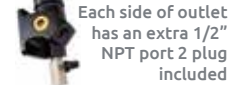
SIZE	PART NUMBER
3"	FI7006



SIZE	PART NUMBER
4"	FI8006
6"	FI9006
8"	FI205006

Wall Outlet

(HAS BOTTOM MOISTURE DRAIN)



Each side of outlet has an extra 1/2" NPT port 2 plug included



TOP INLET	OUTLET SIZE FEMALE	PART NUMBER
3/4"	(4x) 1/2" NPT	F1024
1"	(4x) 1/2" NPT	F2024

Wall Outlet w/ Shutoff

(HAS BOTTOM MOISTURE DRAIN)



TOP INLET	OUTLET SIZE FEMALE	PART NUMBER
3/4"	(4x) 1/2" NPT	F1024V
1"	(4x) 1/2" NPT	F2024V

Thru Wall Or Outside Outlet



CUSTOMER SUPPLIED 1/2" NPT NIPPLE LENGTH VARIES PER WALL THICKNESS

MAIN SIZE	OUTLET SIZE FEMALE	PART NUMBER
3/4"	(1x) 1/2" NPT	F1024W
1"	(1x) 1/2" NPT	F2024W

INDUSTRIAL STYLE			
DIMENSION	A	B	
30 CFM 1/4 Body	5/16"	3/16"	Type M
70 CFM 3/8 Body	7/16"	5/16"	Type H

Quick Coupler



30 CFM INDUSTRIAL STYLE TYPE M

PART NUMBER	MALE THREAD SIZE
K7221	1/4" NPT
K7241	1/2" NPT



PART NUMBER	FEMALE THREAD SIZE
K7220	1/4" NPT



PART NUMBER	MALE THREAD SIZE
K5221	1/4" NPT



PART NUMBER	FEMALE THREAD SIZE
K5220	1/4" NPT

70 CFM INDUSTRIAL STYLE TYPE H

PART NUMBER	MALE THREAD SIZE
K9231	3/8" NPT
K9241	1/2" NPT

PART NUMBER	FEMALE THREAD SIZE
K9230	3/8" NPT
K9240	1/2" NPT

PART NUMBER	MALE THREAD SIZE
K8221	1/4" NPT
K8231	3/8" NPT
K8241	1/2" NPT

PART NUMBER	FEMALE THREAD SIZE
K8220	1/4" NPT
K8230	3/8" NPT
K8240	1/2" NPT

Saddle Drop



MAIN SIZE	DROP SIZE	PART NUMBER
1"	1"	F2210
1½"	¾"	F4110
1½"	1"	F4210
2"	¾"	F5110
2"	1"	F5210



MAIN SIZE	DROP SIZE	PART NUMBER
3"	¾"	FI7110
3"	1"	FI7210



MAIN SIZE	DROP SIZE	PART NUMBER
4"	1"	FI8312
6"	1"	FI9312
8"	1"	FI205312
8"	2"	FI205050

Saddle Drop NPT



MAIN SIZE	DROP SIZE	PART NUMBER
1"	1/4" NPT	F2011
1"	1/2" NPT	F2012
1"	3/4" NPT	F2112
1½"	1/4" NPT	F4011
1½"	1/2" NPT	F4012
1½"	3/4" NPT	F4112
2"	1/4" NPT	F5011
2"	1/2" NPT	F5012
2"	3/4" NPT	F5112



MAIN SIZE	DROP SIZE	PART NUMBER
3"	1/2" NPT	FI7012
3"	3/4" NPT	FI7112
3"	1" NPT	FI7312



MAIN SIZE	DROP SIZE	PART NUMBER
4"	1" NPT	FI8312
6"	1" NPT	FI9312
8"	1" NPT	FI205312



STEP 1



STEP 2



STEP 3



STEP 4

Saddle Drop Installation

- System must be de-pressurized before installing
 - To prevent chips from entering the pipe interior, stop drilling occasionally and blow out chips, grease the end of the drilling tool
1. Position saddle drop opposite the side of the pipe that needs the hole
Tighten securely and mark the pipe by the raised locating mark on the fitting
Mark the pipe both horizontally & vertically along the fitting edge
 2. Drill thru one side of the pipe with the drill bit, using the hole in the fitting as a locator
 3. Insert the saddle drop gasket into the molded cavity
 4. Position the saddle drop over the drilled hole with aligning marks, tighten securely
 5. Attach the necessary drop pipe or threaded adapter



MAIN SIZE	DRILL BIT	GASKET
1"	9/16" F0043	F2210C
1½"	¾" F0044	F4210C
2"	¾" F0044	F5210C
3"	¾" F0044	FI7210C
4"	15/16" F0045	
6"	15/16" F0045	

Flat Surface Installation

- Use pipe clips to secure pipe to any flat surface with mounting screw
- Ceiling or wall mount
- Clip has 5/16" thru hole and hex bore for a 5/16" hex nut
- Hex nut serves as a backer for screws
- Use #10 Drywall Screw or Tapcon
- In horizontal installations, mount clip pivot tab up



MAIN SIZE	PART NUMBER	X DIMENSION
¾"	F1022 - 10 10/pk	15/16"
1"	F2022 - 10 10/pk	7/8"
1½"	F4022 - 10 10/pk	1 15/16"
2"	F5022 - 10 10/pk	1 ¾"
3"	FI7022 each	1 5/8"



Hanging Installation



- Beam Clamp-Pipe Clip
- 5/16" threaded rod
- Pipe Clip



- Beam Clamp
- 3/8" threaded rod
- Loop hanger



3/8 Threaded Rod x 6ft.

PART NUMBER
F0028

3/8 Hex Nut (100 Pack)

PART NUMBER
F0029

- Hangers or mounting clips should be no more than 10 ft. apart and one must be at least 6" from a fitting

- Do not over tighten cantilever type tube supports, pipe must be allowed to expand and contract slightly in length

- See page 6 for expansion joint guidelines



Beam Clamp

- Thru hole design
- Works for both 5/16" and 3/8" threaded rod
- 3/4" width opening



PART NUMBER

F0018

Loop Hanger

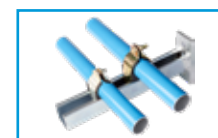
For 3/8" - 16 standard strut

MAIN SIZE	PART NUMBER
3/4" & 1"	F0019
1½"	F0020
2"	F0024
3"	F0030
4"	FI0031
6"	FI0032
8"	FI0052



Cantilever Strut Arm

- 12" overall length
- 1 5/8" standard strut



PART NUMBER

F0021

Strut Cushion Clamp

For 1 5/8" standard strut

MAIN SIZE	PART NUMBER
3/4"	F0017
1"	F0022
1½"	F0023
2"	F0025
3"	FI0028
4"	FI0035
6"	FI0040
8"	FI0050



FastPipe Installation



1
Cut Pipe to length with tubing cutter (cut must be square) (DO NOT USE HACK SAW)



2
Deburr the end of the pipe outside and inside (a smooth edge allows easy fitting assembly and no damage to the fitting O-ring)

3/4" - 3"



3
Mark end of pipe for the proper insertion depth
 3/4" Fittings: 2 inches
 1" Fittings: 2 - 3/4 inches
 1 1/2" Fittings: 4 inches
 2" Fittings: 4 - 3/4 inches
 3" Fittings: 4 - 1/2 inches



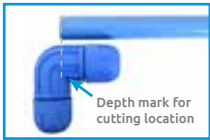
4
Wet end of pipe with very diluted soapy water (DO NOT USE ANY OIL OR GREASE LUBRICANT)



5
Loosen FITTING CONE NUT PARTIALLY
 LOOK INSIDE EACH FITTING FOR INNER PARTS (inner parts, o-ring, stainless steel bite ring)



6
Insert pipe into fitting until pipe bottoms out
Hand tighten fitting
Fully tighten fitting with FastPipe spanner wrenches



Tool Set



MAIN SIZE	PART NUMBER
3/4"	F0136
1"	F0137
1 1/2"	F0138
2"	F0145
3"	F0146

Spanner Wrench



MAIN SIZE	PART NUMBER
3/4"	F1020 each
1"	F2020 each
1 1/2"	F4020 each
2"	F5020 each
3"	F17020 each

(2) REQUIRED

Spray Bottle

PART NUMBER
F0139

Deburr Tool



MAIN SIZE	PART NUMBER
3/4" & 1"	F0142
3/4" thru 2"	F0141

ELECTRIC DRILL REQUIRED



Pipe Cutter

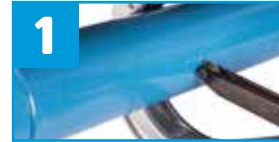


3/4" THRU 2" PART NUMBER
F0140
3" PART NUMBER
F10148

Deburr Tool

MAIN SIZE	PART NUMBER
3"	F10153

FastPipe Installation



1
Cut Pipe to length with tubing cutter (cut must be square) (DO NOT USE HACK SAW)



2
Deburr the end of the pipe outside and inside (a smooth edge allows easy fitting assembly and no damage to the fitting O-ring)

4" - 8"



3
Add marks for lugs Use the locating notches on the outer edge of the deburr head to add marks for the location of the lugs on the pipe.

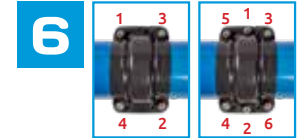
4" : 5 Lugs 6" Pipe : 8 Lugs 8" Pipe 12 Lugs



4
Lug the end of pipe (DO NOT OVERLAP THE LUGS)
 4" : 5 Lugs 6" Pipe : 8 Lugs 8" Pipe 12 Lugs



5
Wet end of pipe with very diluted soapy water and assemble seal and fitting (DO NOT USE ANY OIL OR GREASE LUBRICANT)



6
Tighten bolts per sequence shown 15 ft. lbs - 20 ft. lbs max (DO NOT USE AN IMPACT)

Deburr Tool



MAIN SIZE	PART #
4"	FI0154
6"	FI0155

Pipe Cutter (4" thru 6")



PART NUMBER

FI0149

Lug Tool Jaw Set



MAIN SIZE	PART NUMBER
4"	FI9023
6"	FI9024
8"	FI9025

Cordless Lugging Tool



PART NUMBER

FC0200

⚠ Warnings

- Compressed air is DANGEROUS if not used properly
- Always use EYE PROTECTION when using compressed air
- DO NOT POINT compressed air at your body or any person
- Pressurize system SLOWLY
- TURN OFF air compressor when not in use
- CHECK local building codes before installation
- ALWAYS RELIEVE the system pressure when installing or performing maintenance
- Systems must have a SAFETY RELIEF valve installed at the compressed air source to prevent over pressurization
- When using FastPipe in direct sunlight, cover or paint the polymer fittings to protect from UV exposure** (Pipe needs no covering and can be exposed)
- Keep children away from the system

FastPipe is NOT designed:

- For underground burial
- To electrically ground equipment
- To be welded
- To take violent impacts
- To be used where the compressed air temperature is above 140° F
- For environments of caustic or corrosive chemicals

⚠ WARNING: This product can expose you to chemicals including lead, which is known to the State of California to cause cancer. For more information, go to www.P65Warnings.ca.gov. Wash hands after handling. CONTAINS LEAD: MAY BE HARMFUL IF EATEN OR CHEWED. MAY GENERATE DUST CONTAINING LEAD. KEEP OUT OF THE REACH OF CHILDREN.

Installation Tips & Recommendations

Care must be taken on any installation of the FastPipe system. Pipes will be carrying compressed air/gas up to 190 psi. The FastPipe system is only as safe as a thorough installation. Read all installation instructions and watch videos before starting. Below are some tips for a safe installation.

We strongly recommend that the installer contact our tech department for installation questions PRIOR to the installation.

- Assemble all NPT PIPE THREADS with two wraps of Teflon tape and then pipe sealant which prevents thread galling.
- Support the pipe with clips/ hangers a maximum of 10 FT. SPACING and on ONE SIDE OF EACH FITTING.
- FastPipe can be bent to a maximum of 15° DO NOT OVER BEND. 3/4" Fastpipe can be bent to 45°
- Any machine/compressor plumbed to the FastPipe must have a JUMPER HOSE to reduce vibration.
- Any piping system will expand and contract with temperature changes. Use EXPANSION JOINTS to compensate for this movement of aluminum pipe in non-conditioned buildings.
- DO NOT USE FastPipe for PULSING desiccant dryers or other like equipment.
- CAUTION installing inert gas bulk tank systems, gas must be warmed up to FastPipe temperature range.
- Use a strain relief attached to the building for any rubber hose drops attached to the piping.
- DO NOT connect quick couplings for air hoses to reducing elbows or tee fittings. The constant connecting/ disconnecting and pulling or air hoses could loosen the fitting. Use the FastPipe WALL OUTLET which can be secured to a wall or post. Any hoses attached in the ceiling area to a fitting must use a strain relief attached to the building structure.
- CHECK that all fittings are tightened before pressurizing the system for the first time.
- For initial installation, pressurize system SLOWLY to 50 psi and check for leaks, then pressurize slowly to MAX 190 psi (150 PSI for 8").
- AFTER 24 HOURS of being pressurized, depressurize the system and RETIGHTEN the compression nuts. Some settling of components may have occurred. This is not optional, it must be done.
- Make sure compressor output temperature does not exceed 140° F.

MAXLINE[®]

BY RAPIDAIR



A great alternative for drops and long continuous runs, see our website, www.rapidairproducts.com, for more details.

- 1/2", 3/4", 1", 2"
 - Multi-Layer Semi Flexible Tubing
 - Inner and Outer Layer - HDPE
 - Center Layer - Aluminum
 - Sizes Measured on Inside Diameter
- MAXLINE FITTINGS DO NOT INTERCHANGE DIRECTLY WITH FASTPIPE, BUT CAN CONNECT THRU PIPE THREAD ADAPTERS FITTINGS.



PART NUMBER	PORT SIZE
K93215	3/8" NPT
K93216	1/2" NPT
K93217	3/4" NPT
K93218	1" NPT



PART NUMBER	PORT SIZE
K96075	3/4" NPT
K96050	1/2" NPT



PART NUMBER	SIZE	LENGTH
F0238-160	3/8"	160 ft.
F0238-FT	3/8"	By the ft.
F0250-160	1/2"	160 ft.
F0250-FT	1/2"	By the ft.



PART NUMBER	HOSE SIZE	THREAD SIZE
F0243	3/8"	1/4" NPT
F0244	3/8"	1/2" NPT
F0252	1/2"	1/2" NPT



PART NUMBER	HOSE SIZE	THREAD SIZE
F0240	3/8"	1/4" NPT
F0241	3/8"	3/8" NPT
F0242	3/8"	1/2" NPT
F0251	1/2"	1/2" NPT



PART NUMBER	SIZE	LENGTH
R-03050	3/8"	50 ft.
R-03075	3/8"	75 ft.
R-05050	1/2"	50 ft.
R-05100	1/2"	100 ft.



PART NUMBER	INLET SIZE	# OF PORTS	OUTLET PORTS
H-50-25-4	1/2" NPT	4	1/4" NPT
H-50-25-5	1/2" NPT	5	1/4" NPT
H-50-50-4	1/2" NPT	4	1/2" NPT
H-50-50-5	1/2" NPT	5	1/2" NPT
H-75-50-3	3/4" NPT	3	1/2" NPT
H-75-50-4	3/4" NPT	4	1/2" NPT
H-75-50-5	3/4" NPT	5	1/2" NPT
H-75-75-3	3/4" NPT	3	3/4" NPT
H-75-75-4	3/4" NPT	4	3/4" NPT
H-75-75-5	3/4" NPT	5	3/4" NPT
H-100-75-3	1" NPT	3	3/4" NPT
H-100-75-4	1" NPT	4	3/4" NPT
H-100-75-5	1" NPT	5	3/4" NPT

FAST PIPE[®]

BY RAPIDAIR



**Ask us about our new
RapidAir System Designer**

Design your air system in minutes!